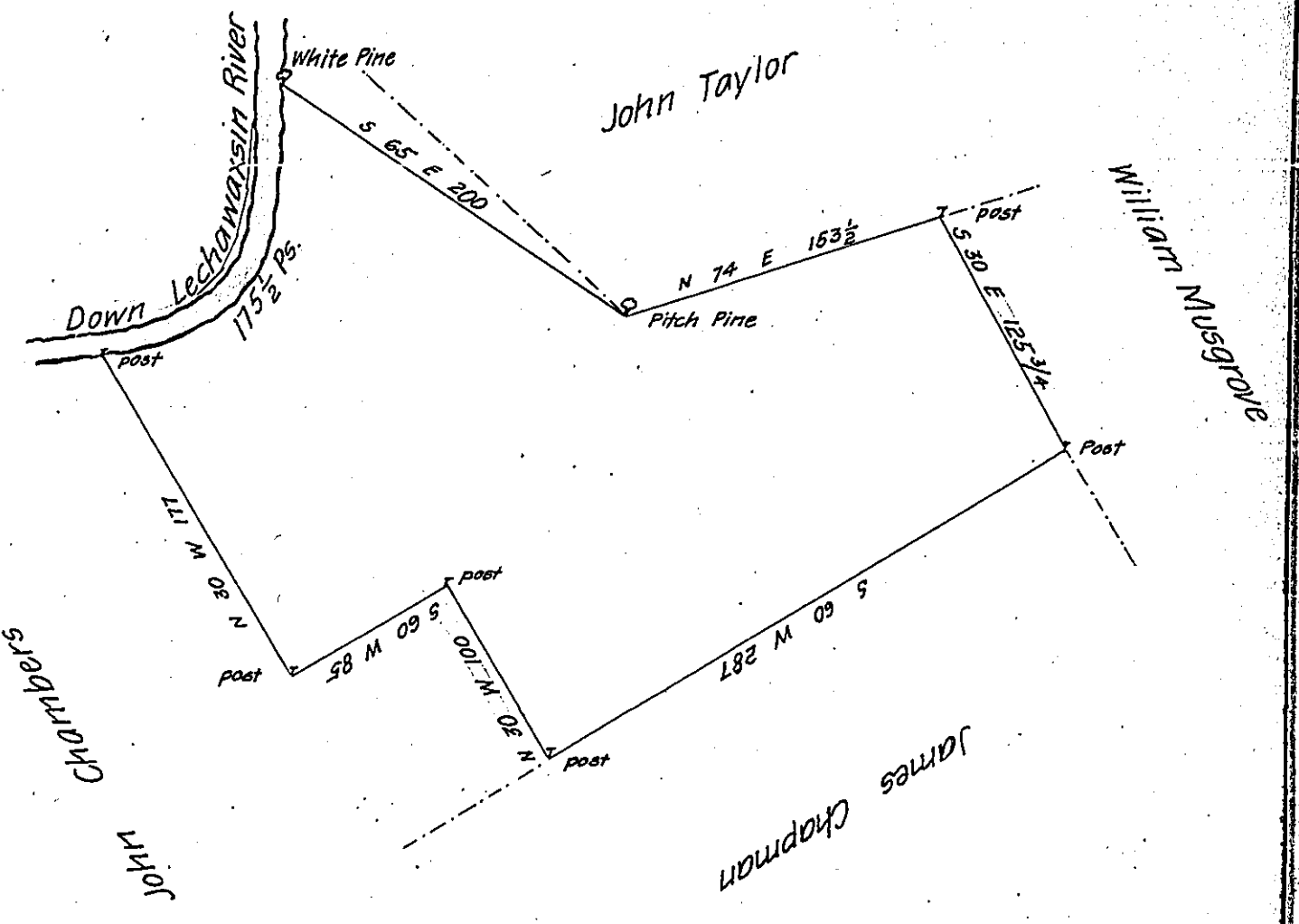


FORM No. 1.

Bearing & distance  
down Lechawaxsin  
River are

N 81 E 24
N 74 E 23
N 47 E 27½
N 38 E 19
N 10 E 30
N 1 W 44
N 14 E 8
<hr/>
175½



By Virtue of a Warrant dated the 12<sup>th</sup> October 1792 surveyed the  
9<sup>th</sup> August 1794 to Mordecai Roberts the above described tract of land situate  
on the South Side of Lechawaxsin River above Roberts's Saw-mill formerly  
in the County of Northampton now in Lechawaxsin township in Pike County con-  
taining four hundred and thirty-one Acres three quarters & the allowance of  
Six P. Cent &c.<sup>a</sup>

To Jacob Spangler Esq<sup>r</sup> } Examined and Geo. Palmer—  
Surveyor General } Approved by } A. V. Coolbaugh D. S.

IN TESTIMONY that the above is a copy of the original remaining on file in  
the Department of Internal Affairs of Pennsylvania, made  
conformably to an Act of Assembly approved the 16th day of  
February, 1833, I have hereunto set my Hand and caused  
the Seal of said Department to be affixed at Harrisburg,  
this twenty first day of November 1906

*Isaac D. Brown*  
Secretary of Internal Affairs.